

## Identification: Life Cycles

Insects have different stages in their life cycles and many look VERY different in the end than they do in the beginning. The major changes that insects go through sometimes makes it difficult to identify them. Here are life cycle diagrams of three common insects that you might find in your garden. Look carefully!

**Metamorphosis** is a profound change in form from one stage to the next in the life history of an organism, as from the caterpillar to the pupa and from the pupa to the adult butterfly.

Can you think of other insects or animals that go through big changes as they get older?

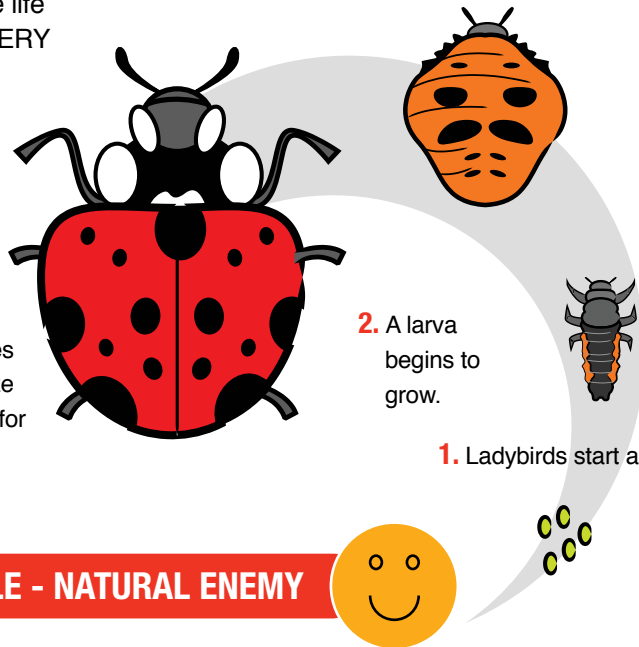
Look for all of these stages of the ladybird beetle life cycle. They are all VERY different-looking and interesting.

4. Adult ladybird beetles are easy to recognize and many are good for your garden!

3. The next stage is a pupa.

2. A larva begins to grow.

1. Ladybirds start as eggs.



**LADYBIRD BEETLE - NATURAL ENEMY**

**APHID - PEST**

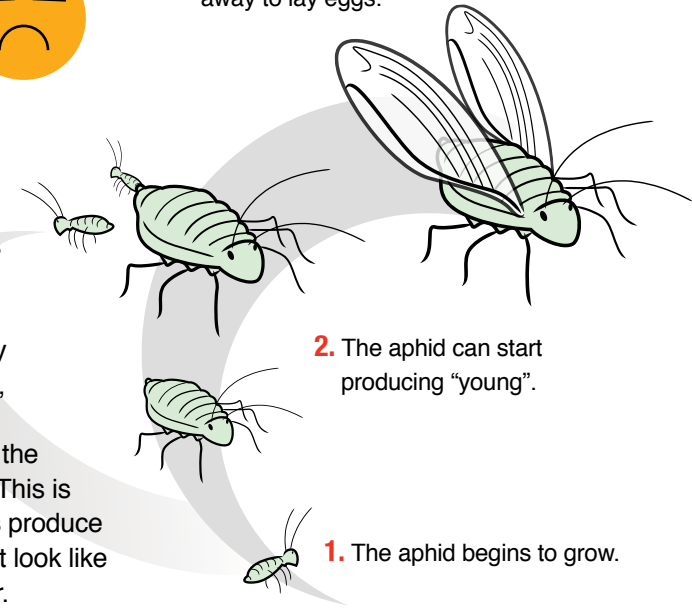


Aphids are very interesting insects. You will not likely find any aphid eggs because adult aphids grow wings at a certain stage of their life cycle and fly away to lay them. However, you may see small aphids coming out of the rear of a bigger one. This is because adult aphids produce live young aphids that look like adults but are smaller.

3. The aphid grows wings and flies away to lay eggs.

2. The aphid can start producing "young".

1. The aphid begins to grow.



3. The larva turns into a cocoon and looks like a leaf.

2. The larva is a green caterpillar that starts out small but grows to be this size.

4. Adults look like moths but can be identified by their white wings with dark spots. Males have one white spot on each wing and females two.

**IMPORTED CABBAGEWORM - PEST**



Cabbageworms are butterflies. You can look for all of these stages in your garden!

1. Cabbageworms start as eggs.

