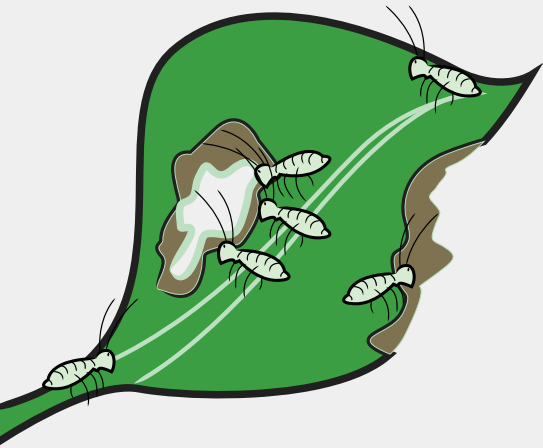


Experiment #1: The Disappearing Aphid

Are ladybird beetles (ladybugs) magicians? Try the experiment below if you can capture a leaf full of aphids and a ladybird beetle.

STEP 1

Find a ladybird beetle and a leaf infested with aphids. Capture the ladybird and pick the leaf off the plant.



STEP 3

Observe the aphids and answer the questions below. Be sure to release the ladybird when you are done.

How many aphids are in the jar to start?

2 hours later how many aphids are in the jar?

6 hours later how many aphids are in the jar?

1 day later how many aphids are in the jar?

3 days later how many aphids are in the jar?

What do you think happened?

STEP 2

Place the leaf in a jar with all the aphids still on it along with the ladybird. Then place a piece of cloth on top (so the insects can breathe) and put a rubberband on the rim of the jar.

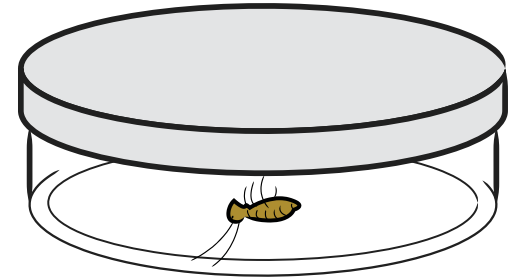


Experiment #2: The "Popping" Brown Aphid

If you find a brown aphid on your plant(s) use the instructions below to see some really cool Biological Control in action!

STEP 1

Collect the brown Aphid(s) and put it in a container with a lid (make sure the lid has holes or use a cloth like in experiment #1).



STEP 2

Wait a couple days and record what you see. You might be surprised!

Do you see any other insects in the container?

What happened to the brown aphid?

Make sure you release any live insects!

